



GAT MONTHLY MEMBERSHIP PROGRESS REPORT

Results as of: 1/31/2022

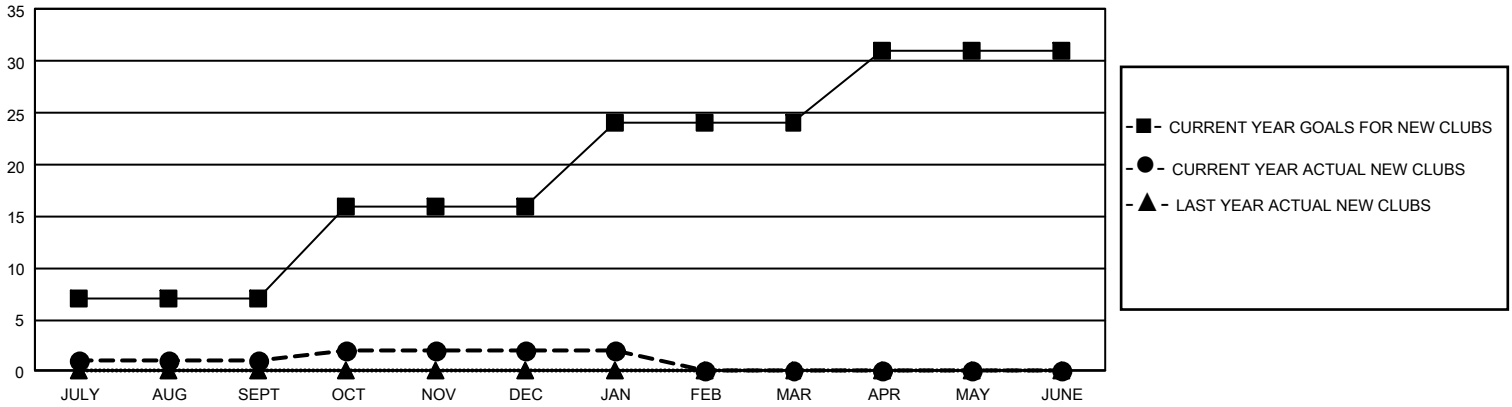
GMT Constitutional Area 1, Group J

REPORT DOES NOT INCLUDE CLUBS IN UNDISTRICTED AREAS.

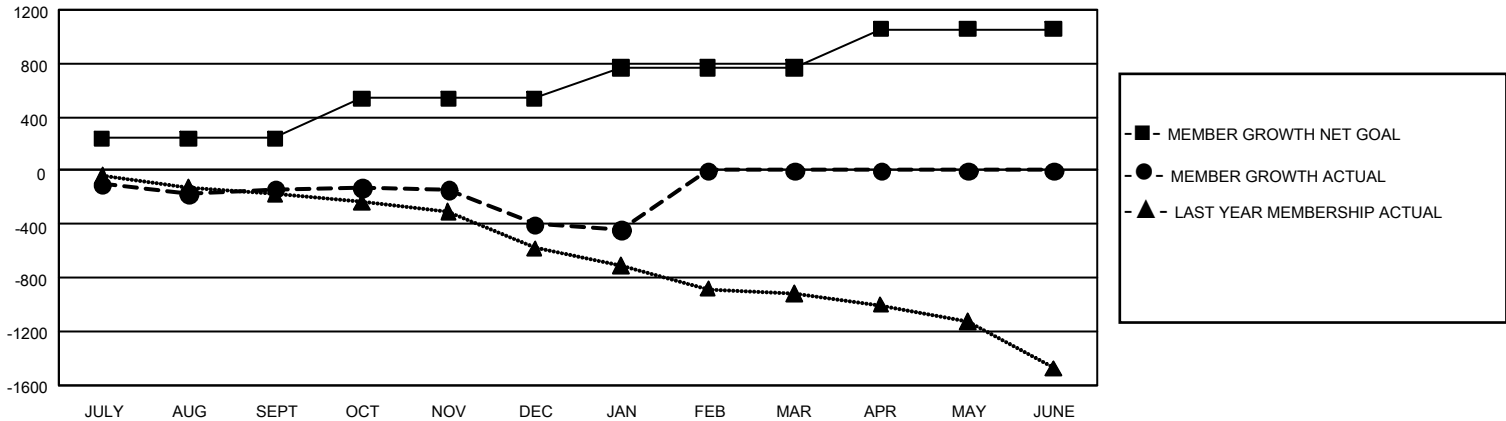
Clubs			
RESULTS FOR 2021-2022			
QUARTER	NEW CLUB GOAL	NEW CLUBS	DROPPED CLUBS
JULY/AUG/SEPT	21	1	10
OCT/NOV/DEC	27	1	13
JAN/FEB/MAR	24	0	2
APR/MAY/JUNE	21	0	0

Members			
RESULTS FOR 2021-2022			
QUARTER	MEMBER GROWTH NET GOAL	MEMBER GROWTH ACTUAL	DROPPED MEMBERS ACTUAL (including transfers)
JULY/AUG/SEPT	241	561	629
OCT/NOV/DEC	297	521	728
JAN/FEB/MAR	231	178	188
APR/MAY/JUNE	287	0	0

GOALS AND ACTUAL NEW CLUBS CUMULATIVE



GOALS AND ACTUAL MEMBERS CUMULATIVE



DROPPED CLUBS: 25	394 CLUBS OF 935 ADDED 1 OR MORE NEW MEMBERS	<u>GENDER DISTRIBUTION</u>	
		MALE	14,797 (70.44%)
<u>DROPPED MEMBERS</u>		FEMALE	6,210 (29.56%)
		NON BINARY	1 (0.00%)
DECEASED	209	PREFER NOT TO ANSWER	0 (0.00%)
CLUB CANCELLED	141	TOTAL FAMILY UNIT MEMBERS	4,054
OTHER	1,195	FAMILY MEMBERS PAYING HALF DUES	2,065
TOTAL	1,545	CLICK HERE FOR CUMULATIVE MEMBERSHIP DATA	